

The
University
Of
Sheffield.

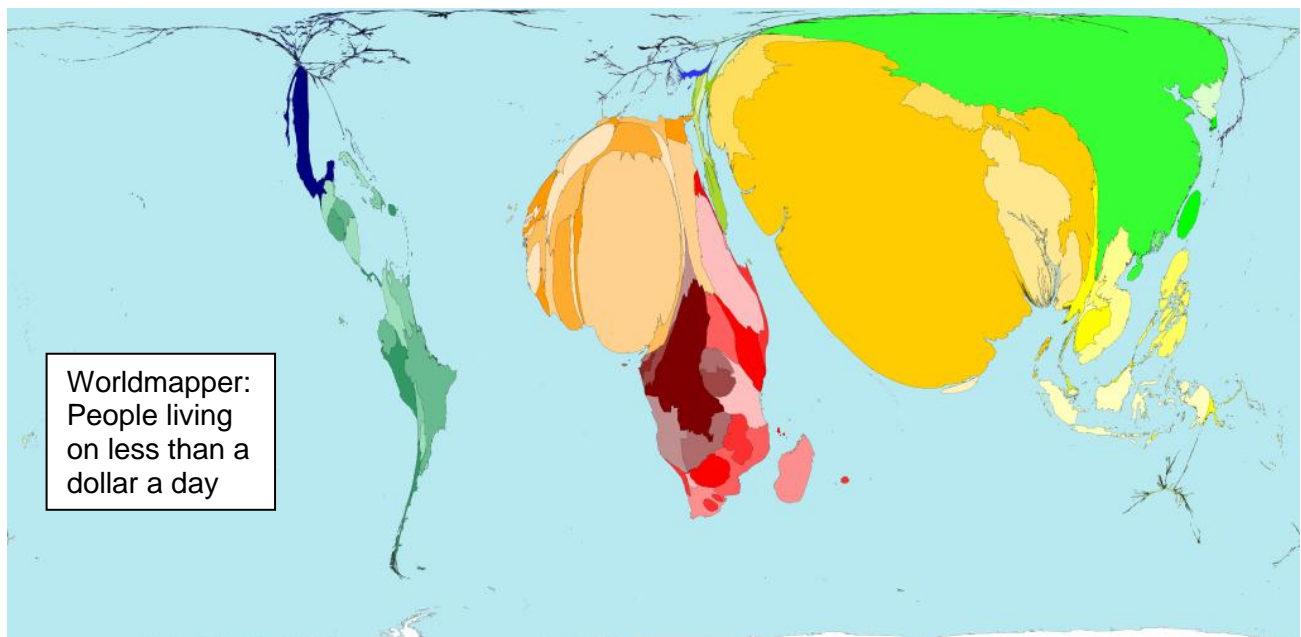
Department
Of
Geography.

MSc Social and Spatial Inequalities (September 2012 entry)

The MSc in Social and Spatial Inequalities is based around, and inspired by, the work of the department's internationally-recognised [SASI research group](#). The group conduct interdisciplinary research which contributes to an evidence base for policy development aimed at reducing social and inequalities. The course breaks new ground as it is unique within the UK in studying inequality from both social and spatial perspectives.

People in the UK are on average better off than ever before across every absolute measure of social and economic development, but the benefits of these developments are far from equally spread. British society is far from unique in terms of letting down sections of society while others continue to prosper; rising income and educational standards disproportionately benefit those who are already well off; unemployment rates are much greater for those who were brought up in disadvantage; a significant minority of people continue to suffer from a lack of material resources and the inequality in the health of the population widens. Through the study of social and spatial inequalities we seek to interpret and understand the results of these accidents of birth in which fortune, may it be good or bad, has deemed which people will gain advantage, or suffer hardship, based on where they grow up.

The MSc in Social and Spatial Inequalities is built around the group's strength in quantitative analysis of social phenomena and the mapping and visualisation of social data. The course offers a variety of modules each of which tackles a different theme or issues within social and spatial inequality, including: Poverty and Deprivation, Global Inequality, Health Inequalities, Happiness and Wellbeing, Mapping and Visualising Inequalities and Social Area Classification. The programme explores social inequality with a specific focus on geography, and the importance of geographic space in recognising and understanding social patterns and social change. The course has an emphasis on giving students an awareness of the many social and economic issues relating to inequality. These issues are fundamental for anyone wishing to pursue a career in social research or social policy.



For more details about the SASI research group and how to apply for the MSc in Social and Spatial Inequalities visit the research group website at: www.shef.ac.uk/sasi

Course Structure:

The SASI programme comprises 180 credits that is comprised of eight, 15 credit modules, Four are themed modules aimed at gaining new knowledge and increased understanding in the subject area. The other four are modules build employment-related skills and research training enabling students to conduct a 60 credit dissertation independently in a field of their own choosing.

	Autumn Semester Sept-Jan	Spring Semester Feb-June	Summer June-Sept
Themed modules aimed at increasing knowledge and understanding	Geo6015: Poverty, Policy and Inequality (15) Geo6019: Global Inequalities (15)	Geo6018: Health Inequality (15) Geo6017: Urban & Regional Inequalities (15)	Geo6021: The SASI Dissertation (60)
Research skills and methods modules aimed at building skills for learning and employment	Geo6016: Data, Visualisation and GIS (15) Geo6024: Quantitative Analysis for SASI 1(15)	Geo6022: The SASI Research Proposal (15) Geo6024: Quantitative Analysis for SASI 2(15)	

Themed Modules

Poverty, Place and Inequality (15 credits)

This module will introduce students to the key concepts within Social and Spatial Inequalities, covering themes such as social policy, segregation, economic and educational inequalities which can lead to the creation of poverty, deprivation and inequality. The module will focus on how these phenomena vary spatially.

Global Inequality (15 credits)

This module has a global focus. It looks at inequality between the countries and regions of the world. Issues discussed will include the differences in life chances depending on which country you are born, changing patterns of global inequality, what is being done to reduce global inequality and which nations are preventing the vast majority of the world's population enjoying a decent standard of living.

Urban & Regional Inequalities (15 credits)

This module looks at inequality within an urban setting. Both how inequality manifests itself within a city, and how it is covered up and how it is often ignored. The module will cover such issues as housing, education, crime and access to services. Examples will be used from both the developed and developing world.

Health Inequalities (15 credits)

This module will explore both the theoretical and practical concepts of inequalities in health in the context of social and spatial inequalities. This will include explanations of inequalities, methods of measurement and their interpretation, ideology and evidence for policy formulation at both international and national levels.

For more details about the SASI research group and how to apply for the MSc in Social and Spatial Inequalities visit the research group website at: www.shef.ac.uk/sasi

Research skills and methods modules

Data, Visualisation and GIS (15 credits)

This module will show students how to deal with spatial data which they will need to use to both identify and understand patterns of social and spatial inequalities. The module will cover the major sources of data used to study inequalities and the variety of ways in which they can be displayed to aid both understanding and analysis. This includes how to create the famous Worldmapper maps and overlay data onto Google maps.

Quantitative Analysis for SASI 1 (15 credits)

This unit guides students through the analysis of quantitative data enabling students to build knowledge and skills in what techniques are available to analyse data. Methods include questionnaire surveys, basic statistical tests, correlation, regression, cluster analysis, indices of segregation and dissimilarity and multi-level analysis.

Quantitative Analysis for SASI 2 (15 credits)

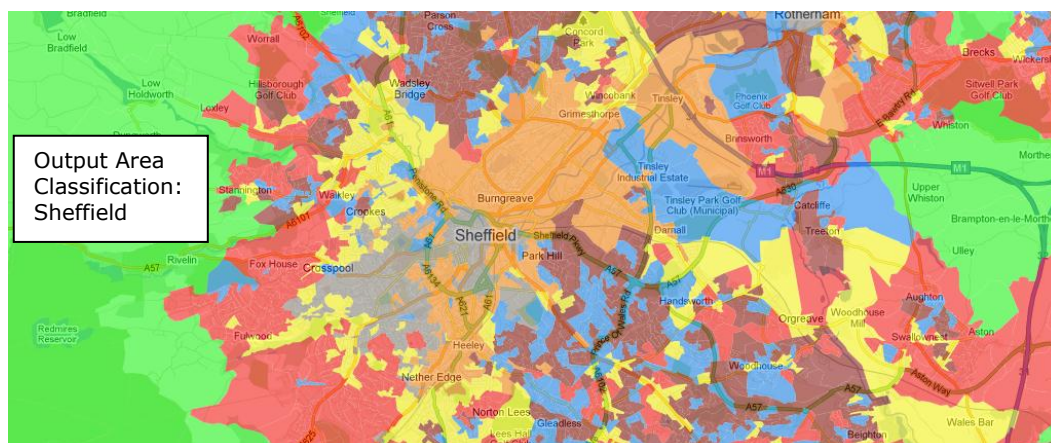
This module deals with the practical concerns of using quantitative analysis within research, considering many of the issues that are key to conducting successful research, but are often overlooked with a classroom environment. This module takes advantage of the SASI team's practical experience and expertise in different quantitative aspects of social and spatial inequalities. The module critically examines the implementation and use of different methods exploring key questions that relate to the selection, purpose and limitations of quantitative research methodologies.

SASI Research Proposal (15 credits)

This module is designed to develop a research proposal capable of providing the basis for a Masters level dissertation. It highlights the importance of locating research in an academic field, allows graduate students to enhance their understanding of specialist literatures and gives training in the preparation of higher level research proposals.

SASI Dissertation (60 credits)

This unit aims to enable students to develop their research, methodological and writing skills by independently designing and conducting a theoretically informed empirical research project. This will involve bibliographic searches, the use of qualitative and/or quantitative research techniques, handling and analysing qualitative or statistical data and writing up the findings.



For more details about the SASI research group and how to apply for the MSc in Social and Spatial Inequalities visit the research group website at: www.shef.ac.uk/sasi

After MSc Social and Spatial Inequalities

All September 2010 graduates are in full time work or further study. Half of 2011 graduates found work or further study before completing the course.

Employment and further research Positions of MSc SASI graduates from 2009/10 and 2010/11:

- Anna Freud Centre, Administrator, London
- Climate Energy Ltd, Research and Data Analysis, London
- Department of Education, Administration and Research, London
- Department of Education, Statistics Officer, Sheffield
- Newcastle City Council, Office of Council Leader, Newcastle
- Nickelodeon, Researcher, London
- Picker Institute, Researcher, Oxford
- South Yorkshire Police, Analyst, Sheffield
- Television Research Partnership, Researcher, Taunton
- University of Cambridge, Fully funded PhD scholarship, Cambridge
- University of Glasgow, Fully funded PhD scholarship, Glasgow
- University of Leeds, Fully funded PhD scholarship, Leeds
- University of Manchester, Fully funded PhD scholarship, Manchester
- University of Sheffield, Fully funded PhD scholarship, Sheffield
- University of Sheffield, Fully funded PhD scholarship, Sheffield
- University of Southampton, Fully funded PhD scholarship, Southampton

What our students say:

"I chose the course because it offered a good balance of theoretical debates alongside an opportunity to learn more practical skills in methods and mapping. I can now design and build a map in a matter of minutes, something I wouldn't even have attempted before this course."

"I'm now doing a PhD at the University of Sheffield, and I know for a fact that it was the skills and confidence gained on this course that helped me secure funding. One of my favourite parts of the course was feeling part of a research group. We all got on very well, and had access to friendly and helpful academics throughout the year."

Luke Temple MSc SASI student 2009/10

"I chose to do the Social and Spatial Inequalities Masters because I loved what I was doing at undergraduate level and didn't want to stop! The Masters gave me the perfect opportunity to focus my interests and further my knowledge on measuring and understanding different aspects of social and spatial inequalities."

"I thoroughly enjoyed the course as a whole; I met a lot of interesting people and got to learn about things that really interest me. I particularly enjoyed the Urban Inequalities module which covered a wide range of topics and encouraged a lot of discussion and debating. The GIS module is also really interesting and from it I have gained a lot of useful skills in map making, data handling and data visualisation. The Masters has not only broadened my knowledge and skills in specific areas, such as learning to use specific GIS software and statistics packages, but also furthered my critical thinking and improved my confidence in giving academic presentations and discussing complicated issues."

Phillippa Newbould MSc SASI student 2009/10

"I chose the social and spatial inequalities course due to the uniqueness of the material it teaches. What fascinates me most about geography is how certain phenomena vary by place, and how living in one area can significantly alter your life chances than living elsewhere. The course allowed me to gain a greater understanding of how these processes exist, as well as the tools to allow me to investigate my own research ideas.

What I enjoyed the most about the course was the freedom given to conduct research on any topics that I was interested in. This not just improved my understanding of these topics, but also helped establish my ability to conduct original research which will be invaluable to future career. Furthermore teaching was conducted through seminars which provided informed debates which revolve around the topics that we were interested in. Both these types of learning were less restricted, and much more enjoyable than undergraduate learning.

The skills taught within the course relate to recent advances within the field. These skills have helped improve the overall quality of my work. The seminars also promote a critical understanding of theories which has taught me to question important paradigms and improve my overall understanding of topics. The course led me to gain a PhD scholarship at the University of Sheffield, allowing me to conduct further research into the themes that I enjoyed within the course. Without the Masters, this would have not been possible due to the range of skills and understanding gained from the content taught. Certainly the course has proved invaluable to both my current PhD and my future career."

Mark Green MSc SASI student 2009/10

MSc Social and Spatial Inequalities

Further Information and Keeping in Touch

The best place to get further information and to keep in touch with what is going on is via the SASI web pages at www.shef.ac.uk/sasi

If you have specific questions or would like to arrange to visit the department don't hesitate to get in touch. The quickest way to do this is through the course convenor Dr Dan Vickers e-mail: d.vickers@sheffield.ac.uk